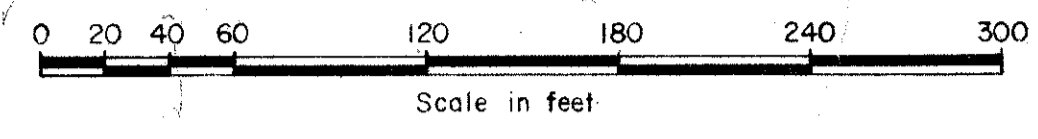


Plat of SANDALFOOT COVE, SECTION TWO

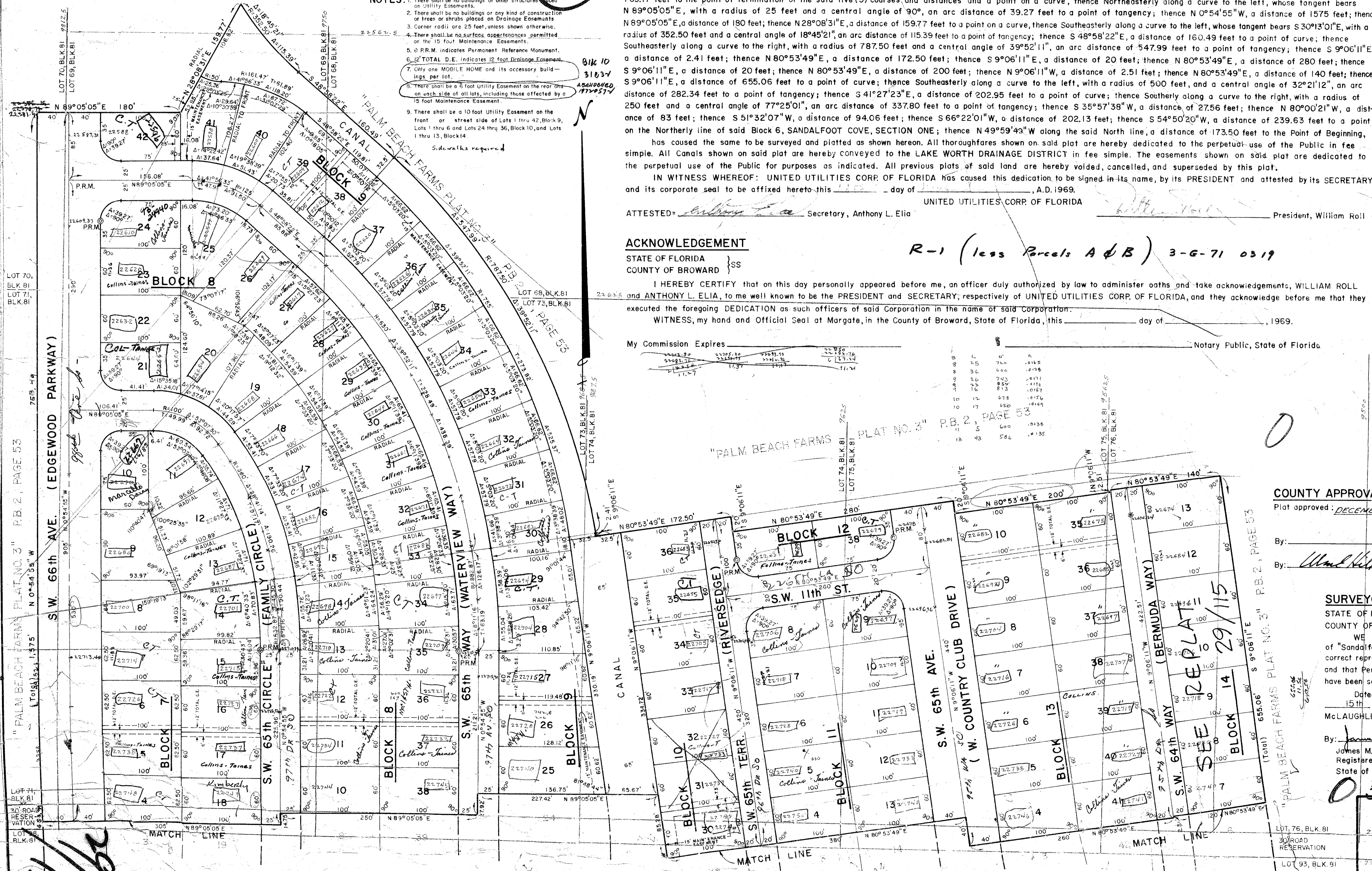
Section 30, Township 47 South, Range 42 East Palm Beach County, Florida

BEING A REPLAT OF PORTIONS OF PALM BEACH FARMS PLAT NO. 3, PLAT BOOK 2, PAGE 53



54

- NOTES:
- There shall be no buildings or other structures placed on Utility Easements.
 - There shall be no buildings or any kind of construction or lines or shrubs placed on Drainage Easements.
 - Corner radii are 25 feet, unless shown otherwise.
 - There shall be no surface appearances permitted on the 15 foot Maintenance Easements.
 - P.R.M. indicates Permanent Reference Monument.
 - TOTAL D.E. indicates 12 foot Drainage Easement.
 - Only one MOBILE HOME and its accessory buildings per lot.
 - There shall be a 5 foot Utility Easement on the rear and on each side of all lots, including those affected by a 15 foot Maintenance Easement.
 - There shall be a 10 foot Utility Easement on the front or street side of Lots 1 thru 42, Block 8, Lots 1 thru 6 and Lots 24 thru 36, Block 10, and Lots 1 thru 13, Block 14.



DEDICATION
STATE OF FLORIDA }
COUNTY OF PALM BEACH } SS

7230

KNOW ALL MEN BY THESE PRESENTS that UNITED UTILITIES CORP. OF FLORIDA, a Florida corporation, owner of a Tract of land lying and being in Section 30, Township 47 South, Range 42 East, Palm Beach County, Florida, shown hereon as SANDALFOOT COVE, SECTION TWO and being more particularly described as follows, to wit:

Portions of Lots 68, 69, 70, 71, 72, 73, 74, 75, 76, 92, 93, 94, 95, 96, 97, 98, 99, 100, 101 and 102, Block 81, PALM BEACH FARMS, PLAT NO. 3, as recorded in Plat Book 2, Page 53, of the public records of Palm Beach County, Florida; TOGETHER WITH that certain 30 foot road reservation lying between said Lots 71, 72, 73, 74, 75, 76, 93, 94, 95, 96, 97 and 98, and ALSO TOGETHER WITH that certain 30 foot road reservation lying between said Lots 92, 93, 101 and 102, and being all more fully described as follows:

Beginning at the most Northerly corner of Lot 31, Block 6, SANDALFOOT COVE, SECTION ONE, as recorded in Plat Book 28, Pages 225 and 226, of the public records of Palm Beach County, Florida; thence Northeasterly, Northwesterly and Westerly along the Northerly boundary line of said SANDALFOOT COVE, SECTION ONE, the following five (5) courses and distances; Northeasterly along a curve to the right, whose tangent bears N 61° 17' 22" E, with a radius of 980 feet and a central angle of 2° 35' 44", an arc distance of 44.39 feet to a point of tangency; thence N 63° 53' 06" E, a distance of 52.54 feet; thence N 41° 47' 15" W, a distance of 262.60 feet to a point of curve; thence Northwesterly along a curve to the left, with a radius of 430 feet, and a central angle of 49° 07' 40", an arc distance of 368.70 feet to a point of tangency; thence S 89° 05' 05" W, a distance of 769.17 feet to the point of termination of the said five (5) courses, and distances and a point on a curve, thence Northeasterly along a curve to the left, whose tangent bears N 89° 05' 05" E, with a radius of 25 feet and a central angle of 90°, an arc distance of 39.27 feet to a point of tangency; thence N 0° 54' 55" W, a distance of 1575 feet; thence N 89° 05' 05" E, a distance of 190 feet; thence N 28° 08' 31" E, a distance of 159.77 feet to a point on a curve, thence Southeasterly along a curve to the left, whose tangent bears S 30° 13' 01" E, with a radius of 352.50 feet and a central angle of 18° 45' 21", an arc distance of 115.35 feet to a point of tangency; thence S 48° 58' 22" E, a distance of 150.49 feet to a point of curve; thence Southeasterly along a curve to the right, with a radius of 787.50 feet and a central angle of 39° 52' 11", an arc distance of 547.99 feet to a point of tangency; thence S 9° 06' 11" E, a distance of 2.41 feet; thence N 80° 53' 49" E, a distance of 172.50 feet; thence S 9° 06' 11" E, a distance of 20 feet; thence N 80° 53' 49" E, a distance of 280 feet; thence S 9° 06' 11" E, a distance of 20 feet; thence N 80° 53' 49" E, a distance of 200 feet; thence N 9° 06' 11" W, a distance of 2.51 feet; thence N 80° 53' 49" E, a distance of 140 feet; thence S 9° 06' 11" E, a distance of 655.06 feet to a point of curve; thence Southeasterly along a curve to the left, with a radius of 500 feet, and a central angle of 32° 21' 12", an arc distance of 282.34 feet to a point of tangency; thence S 41° 27' 23" E, a distance of 202.95 feet to a point of curve; thence Southerly along a curve to the right, with a radius of 250 feet and a central angle of 77° 25' 01", an arc distance of 337.80 feet to a point of tangency; thence S 35° 57' 38" W, a distance of 27.56 feet; thence N 80° 00' 21" W, a distance of 83 feet; thence S 51° 32' 07" W, a distance of 94.06 feet; thence S 66° 22' 01" W, a distance of 202.13 feet; thence S 54° 50' 20" W, a distance of 239.63 feet to a point on the Northerly line of said Block 6, SANDALFOOT COVE, SECTION ONE; thence N 49° 59' 43" W along the said North line, a distance of 173.50 feet to the Point of Beginning, has caused the same to be surveyed and platted as shown hereon. All thoroughfares shown on said plat are hereby dedicated to the perpetual use of the Public in fee simple. All Canals shown on said plat are hereby conveyed to the LAKE WORTH DRAINAGE DISTRICT in fee simple. The easements shown on said plat are dedicated to the perpetual use of the Public for purposes as indicated. All previous plats of said land are hereby voided, cancelled, and superseded by this plat.

IN WITNESS WHEREOF: UNITED UTILITIES CORP. OF FLORIDA has caused this dedication to be signed in its name, by its PRESIDENT and attested by its SECRETARY and its corporate seal to be affixed hereto this _____ day of _____, A.D. 1969.

ATTESTED: _____ Secretary, Anthony L. Elia
_____ President, William Roll

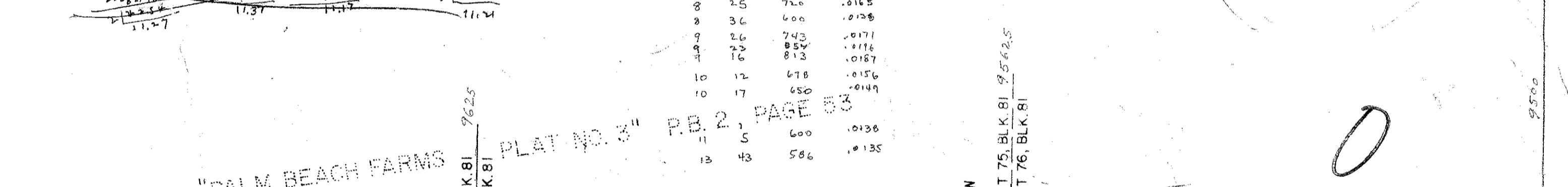
ACKNOWLEDGEMENT
STATE OF FLORIDA }
COUNTY OF BROWARD } SS

R-1 (less Parcels A & B) 3-6-71 0319

I HEREBY CERTIFY that on this day personally appeared before me, an officer duly authorized by law to administer oaths and take acknowledgements, WILLIAM ROLL and ANTHONY L. ELIA, to me well known to be the PRESIDENT and SECRETARY, respectively of UNITED UTILITIES CORP. OF FLORIDA, and they acknowledge before me that they executed the foregoing DEDICATION as such officers of said Corporation in the name of said Corporation.

WITNESS My hand and Official Seal at Margate, in the County of Broward, State of Florida, this _____ day of _____, 1969.

My Commission Expires _____ Notary Public, State of Florida.



COUNTY APPROVAL
Plat approved: DECEMBER 9th 1969 Board of County Commissioners.

By: _____, Chairman
By: Wm. Hill, County Engineer

SURVEYOR'S CERTIFICATE

STATE OF FLORIDA }
COUNTY OF BROWARD } SS

WE HEREBY CERTIFY that this Plat of "Sandalfoot Cove, Section Two" is a true and correct representation of a survey made by us, and that Permanent Reference Monuments (P.R.M.s) have been set as required by law.

Dated at Fort Lauderdale, Florida, this 15th day of October, 1969.

McLAUGHLIN ENGINEERING CO.

By: James M. McLaughlin
Registered Land Surveyor No. 2021
State of Florida

Prepared by: BURMAN
McLaughlin Engineering Co.
400 N.E. 3rd Avenue
Fort Lauderdale
Florida
33301

COUNTY OF PALM BEACH }
STATE OF FLORIDA }
This Plat was filed for record on 15th 1969
at 11:55 day of December
1969 and duly recorded in Plat Book No. 29
on page 15-16.
JOHN B. DUNKLE, Clerk Circuit Court
Margaret Mullan D.C.

15
29/15

SIDEWALK REQUIRED
TURNOUT REQUIRED

DRAWING NUMBER
29-15

DRAWING NUMBER
29-15

DRAWING NUMBER
29-15

DRAWING NUMBER
29-15